



# OverSite™

Zero-Touch Technology

## The New Industry Standard for Process Data Management

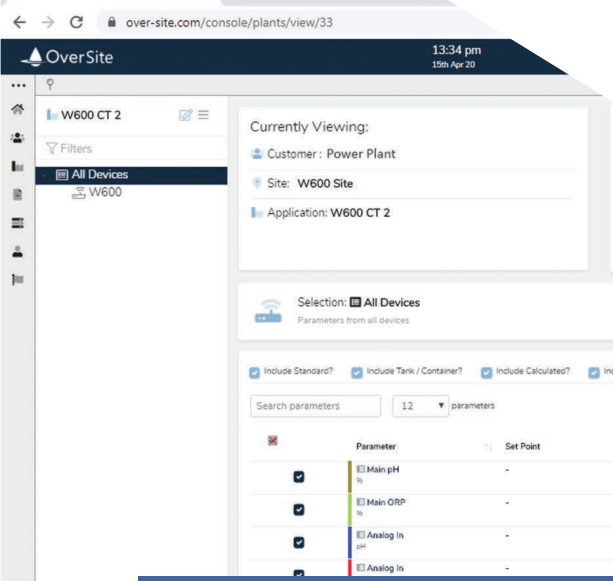
**Knowing what's going  
on in real-time is critical.**

**Being able to make process  
adjustments remotely can be  
equally important.**

**Plant Operators'** effectiveness can be significantly improved by access to real-time, trending, and historical data.

**Water Treatment Companies** typically serve multiple customers in dozens of plants. Managing their portfolios and prioritizing daily & weekly site visits was once a time and energy-intensive task.

But now – the monitoring and management activities associated with chemical dosing and water treatment have become significantly easier for plant operators and water treatment specialists – thanks to **OverSite™**.



**OverSite™ is a device agnostic, cloud-based data acquisition and process management portal. Users can log on to the highly secure website from anywhere in the world to view, store, input and manipulate all of their process data and critical parameters.**

## OverSite™ Is...

### Cloud-Based

Customer data can be entered both manually and automatically into the Google Cloud Platform, which is owned and managed by EquipSolutions on behalf of our clients.

### Device Agnostic

OverSite™ is compatible with any device that includes an Ethernet port. It is not restricted to any specific brand of analyzer, controller or equipment, service, or chemical provider.

### Flexible

End users can log on to OverSite™ from anywhere in the plant, or anywhere in the world, using any laptop or handheld device.

### Secure

OverSite™ provides secure, instant access to process data and it brings the ability to adjust critical parameters with the touch of a button.

### Fully Customizable

OverSite™ works the way you do. Its analytical capabilities are customized to your unique requirements. All reports, graphs & charts are tailored to your preferences, and notification or alerts can be sent to any device via text, email or IM.



OverSite™ provides timestamped historical data that can be analyzed down to any detail. Parameter capabilities include: live data stored in graphs and reports, diagnostic tools, notifications, alarms and other customizable features.

This technology allows the user to identify patterns and trends. Its analytical capabilities guide the adjustment of chemical feed equipment to ensure maximum efficiency even as process conditions change.

- OverSite™ gives plant personnel peace-of-mind that their operations remain in control and in compliance.
- OverSite™ also provides water treatment companies with a data-driven workflow that helps them service multiple customers in the most efficient way possible.

## OverSite™ Main Features

1. Connect to multiple end point devices
2. Direct communication to end point device with remote access
3. Automatic report generation and delivery
4. Advanced service report capability
5. Real-time notifications and alarms delivered by text, email and IM
6. Continuous secure web-based data management and reporting
7. Real-time access and control of your critical process data

OverSite™ is designed and structured to be data-driven.

OverSite™'s features ensure that users have reliable, consistent, meaningful and secure data – all in one pane of glass, from anywhere in the world.

**OverSite™ gives mid-sized and regional water treatment chemical companies the capability of larger water treaters, without the investment.**

As an equipment company – EquipSolutions can leverage OverSite™ to remotely support pumps, engineered chemical feed systems, and monitoring panels to ensure that our customers' processes are functioning as expected.



Minimize “windshield time” by using OverSite™ to plan your site visits

# Zero-Touch Technology

## Onboarding Made Easy:

**OverSite™** is a true Cloud Solution, which means it can be commissioned, run and supported remotely.

This enables EquipSolutions to onboard new clients and gather all of the information needed to build a client profile remotely. We can enter application data, and establish site parameters for all major controllers, without having to be onsite.

For day-to-day operations, the customer doesn't need to be onsite. Once the information for critical indicators has been entered – set points can be confirmed, compliance ranges can be monitored and notifications/alarms can be managed remotely. That's the power of the **OverSite™** cloud-based solution.

**One of the biggest competitive differentiators for OverSite™ is the commissioning process.** No other web-based portal solution offers such a simple, Zero-Touch process.

## Key technical advantages of OverSite™ include:

- Secure Data Transfer
- EquipSolutions has access to, and experience with, most of the industry-standard modems.
- The EquipConnect 2.0 modem package comes pre-activated with the multi-carrier agnostic SIM card installed.

EquipSolutions has leveraged thousands of hours of experience from hundreds of customer sites, to deliver a powerful and intuitive solution that's easy to deploy, and easy to use.



# Dashboard / Overview

**OverSite™** offers up-to-the-minute visibility into operational data so it can be leveraged to optimize processes.

With **OverSite™**, vital information flows to anyone who needs it, 24 hours a day, 365 days a year, via remote access and secure connections to multiple end point devices.

The user friendly interface makes it easy to analyze recorded data, such as live sensor data, chemical inventories, controller data, and potential early warning signs that might prompt maintenance activities. Critical diagnostic & control measurements ensure optimal efficiency, and make it faster and easier to respond to any alert issues.

Quick & convenient search capabilities help operators compare recent or historical data to current operational levels, to maintain compliance.

## Seamless Connectivity:

EquipSolutions has partnered with an industry-leading modem manufacturer to provide a standard cell modem for **OverSite™** to ensure consistency, and worry-free connectivity.

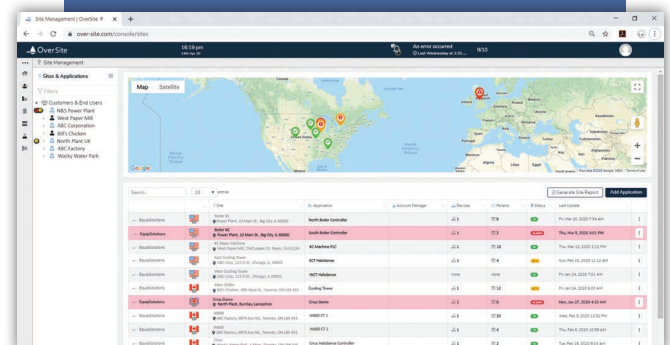
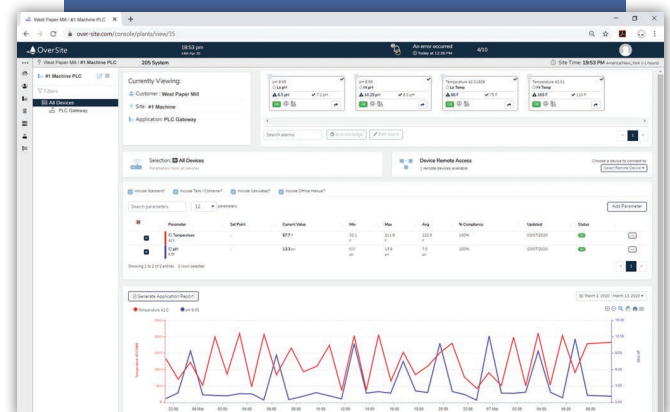
The communications support team can work with legacy modems and any cell modem hardware currently deployed in the field.

EquipSolutions has also partnered with a SIM card company to implement a number of different protocols that ensure seamless SIM and modem integration. This provides: agnostic compatibility, pre-activation, pre-loaded data storage per month (1GB), and a live diagnostic online interface.

EquipSolution's holistic approach makes it easy for customers to adopt and implement **OverSite™**. All of the connectivity issues are addressed by EquipSolutions. Customers do not need to purchase an IP address from data carriers such as Verizon, AT&T, T-Mobile, etc.

## OverSite™ Value Proposition

- A water treatment company can use **OverSite™** to provide clients with real-time analytics to prove that treatment programs are working.
- Allows users to perform remote troubleshooting and diagnostics.
- Gives end users the ability to network applications at one site or network multiple sites within their organization.
- **OverSite™** is not tied to specific branded controllers, specific chemical suppliers or applications. It is a standalone product that is available to everyone.



# Secure Data Management

## Secure Data Transfer (SDT)

The ability to share sensitive data via secure, reliable delivery methods is imperative.

Security features must be readily available to protect the transmission of data to mobile devices – and they must also be on guard to protect data stored on servers in the cloud.

**OverSite™** features Secure Data Transfer (SDT) services via M2M gateways as well as IIoT intelligent devices in the field.

Advanced security features include:

- Incremental security through Invite-only IP addressing.
- The ability to build and remotely manage VPN tunnels with advance routing.
- Advanced edge protection from attackers.

The security features included with **OverSite™** are consistent with the protocols used by federal government agencies, the US Military, and various state & local first-responders.

**Please ask about our SDT documentation for further details**



# What Makes EquipSolutions Different from other Data Management Providers?

## We Know Water Treatment & Chemical Metering

## We Know Equipment

We are a distributor for industry leading brands such as Walchem, LMI, Crius, Seametrics, Grundfos and many more.

## We are an Engineering Firm

We design, build & install highly customized chemical feed & monitoring systems for industrial water treatment clients.

## We Understand Customer Needs

For 25 years, our path to market has been through industry-leading water treatment companies. At our customers' requests, we have also worked with end-users, such as major utilities (both nuclear and coal/gas fired), refineries & petrochemical plants, food & beverage plants, paper mills and manufacturing facilities.

## We Know Data:

Industrial plants today – more than ever – need process data at their fingertips.

We know what plant operators need when it comes to managing data. We understand the pain points. We know what works and what doesn't.

Our unique understanding of:

1. Customer requirements
2. Product knowledge across a wide spectrum of digital and industrial technologies
3. Engineering expertise to build custom solutions

Enables EquipSolutions to offer a universal data monitoring & management platform that is unrivaled anywhere in the water treatment and chemical metering industries.



# Knowledge gives you piece of mind... Let OverSite™ show you how

**If you're a Plant Operator**, the OverSite™ dashboard gives you full visibility into chemical feed applications and a high level of awareness for the health of your entire operation. If you ever change chemical suppliers or equipment providers – No need to worry – as OverSite™ keeps track of all your process and supplier data.

**If you're a Water Treater** – don't work another day without this account management tool. OverSite™ will transform how you plan and prioritize your day – It lets you manage multiple sites from one location, and it brings a new level of productivity to your service calls, maintenance & benchtop tests.



## Take a Test Drive Today!

Call us or visit [equip-solutions.com/oversite](http://equip-solutions.com/oversite)

We'll answer your questions, show you how OverSite™ can improve your operation and give you greater control of your business.



📍 31 Presidential Drive, Roselle, IL 60172

☎ 800-200-1800

✉ [CustomerCare@equip-solutions.com](mailto:CustomerCare@equip-solutions.com)

🖱 [equip-solutions.com](http://equip-solutions.com)